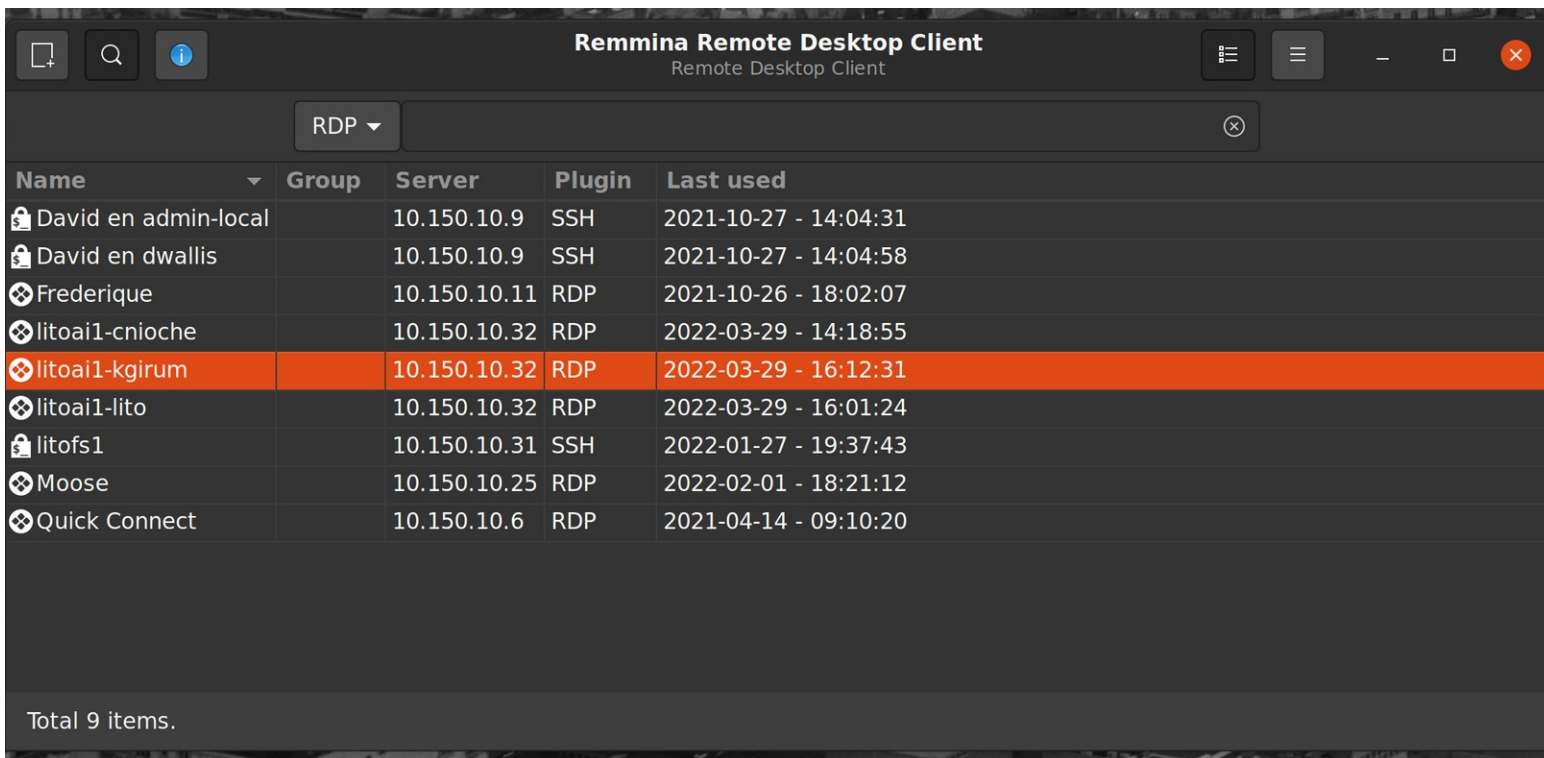
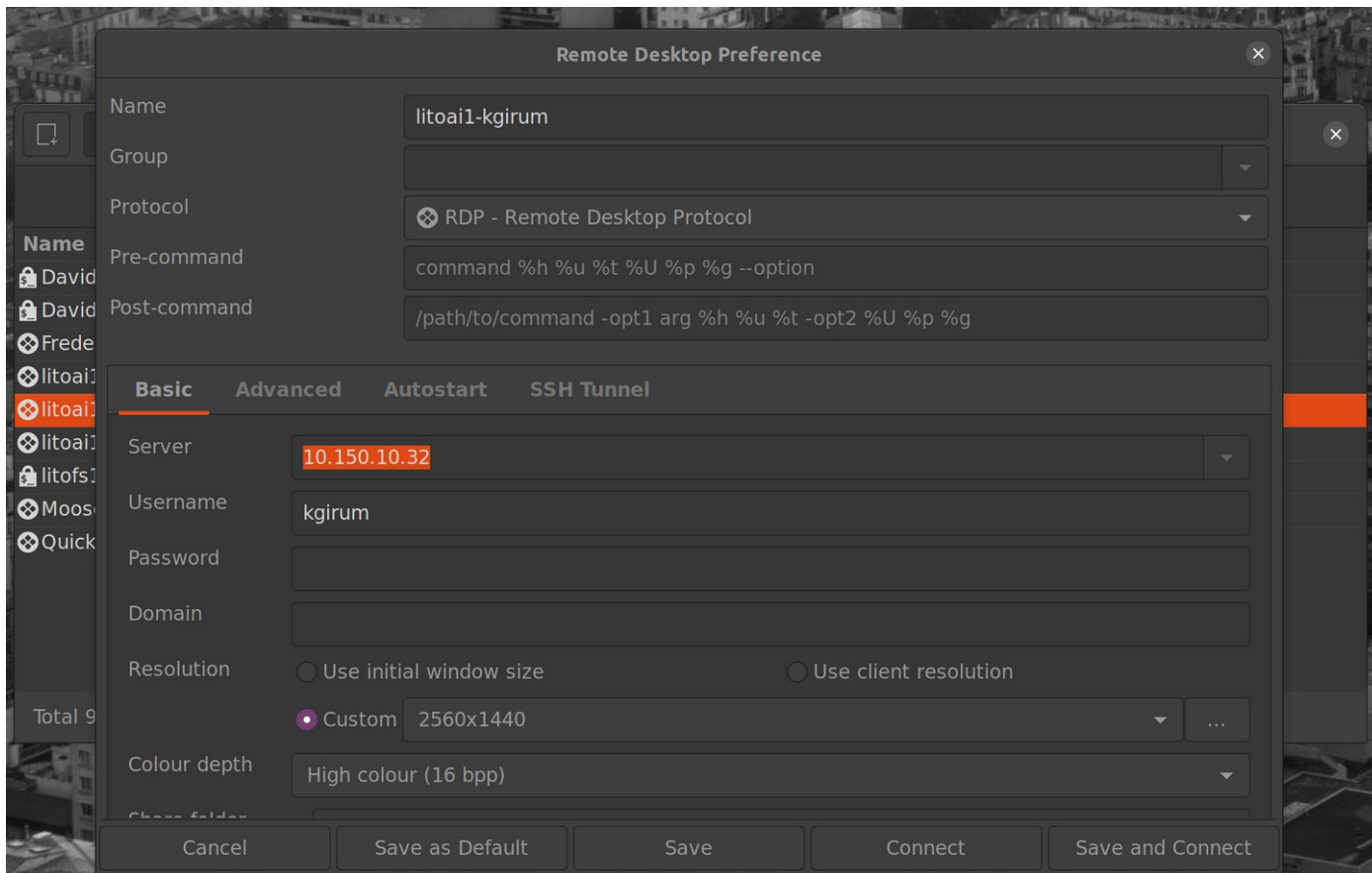


# Connexion under rdp/xdp service

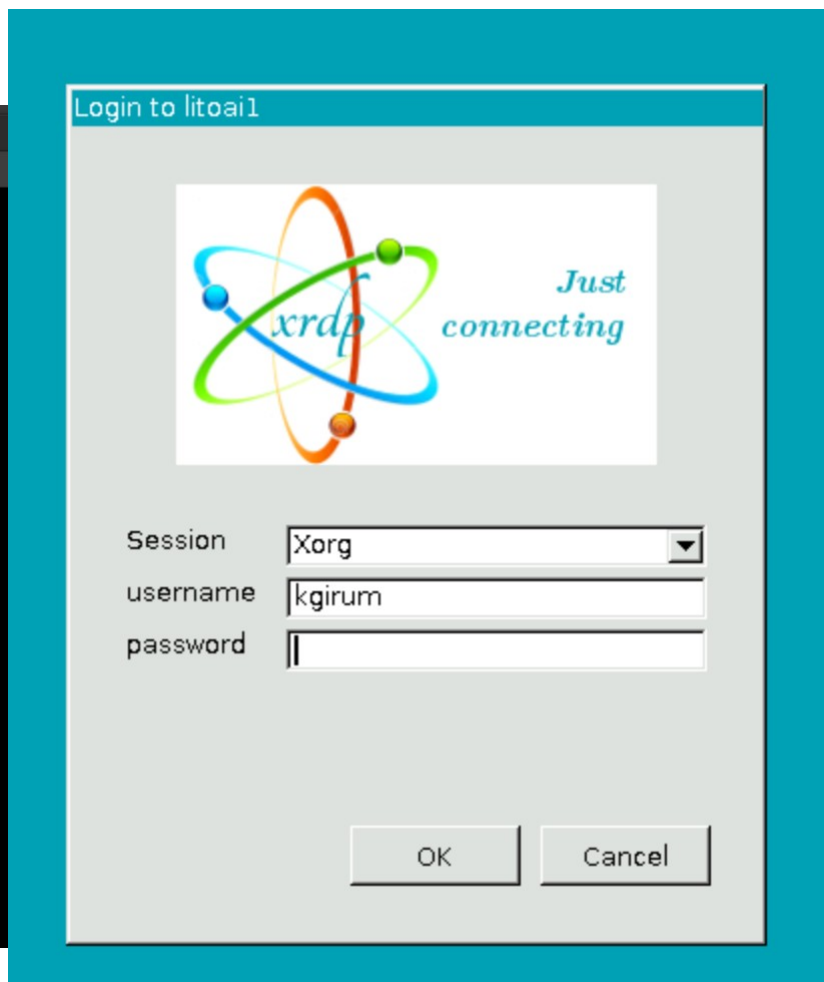
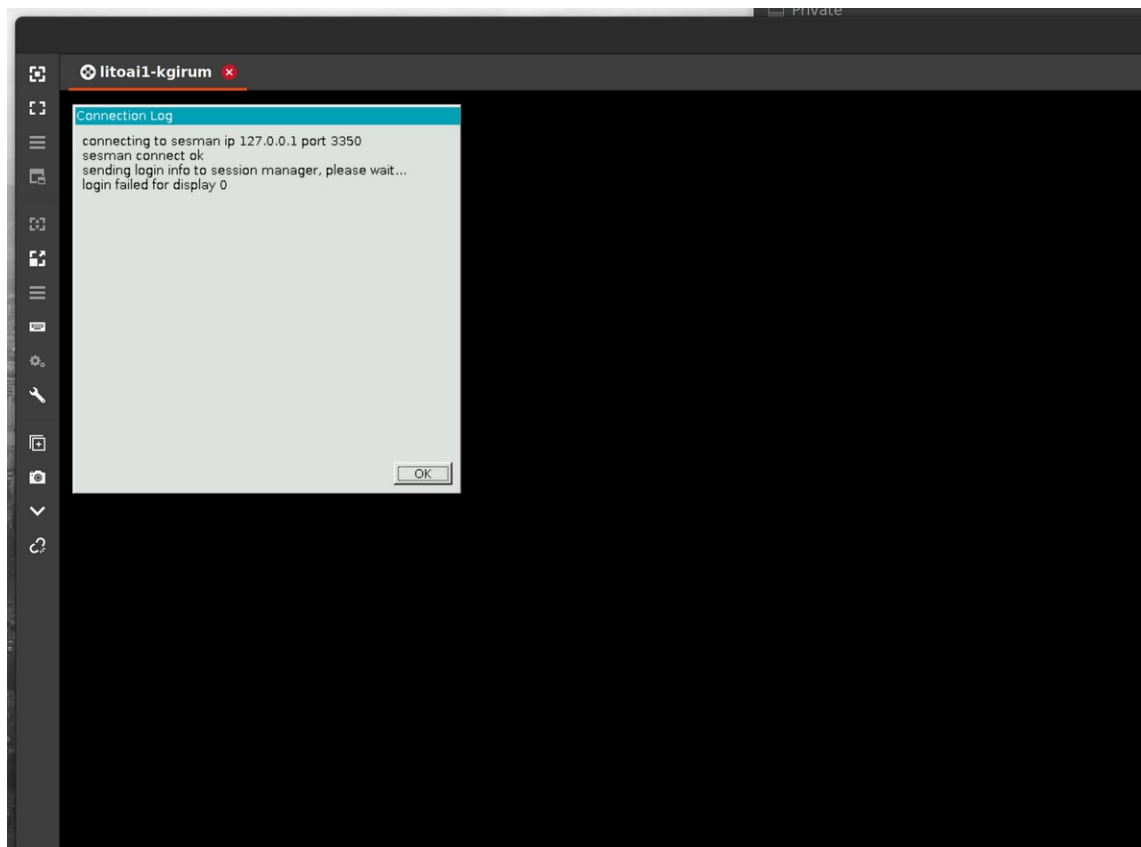
sudo apt update & sudo apt upgrade -y & sudo apt install remmina

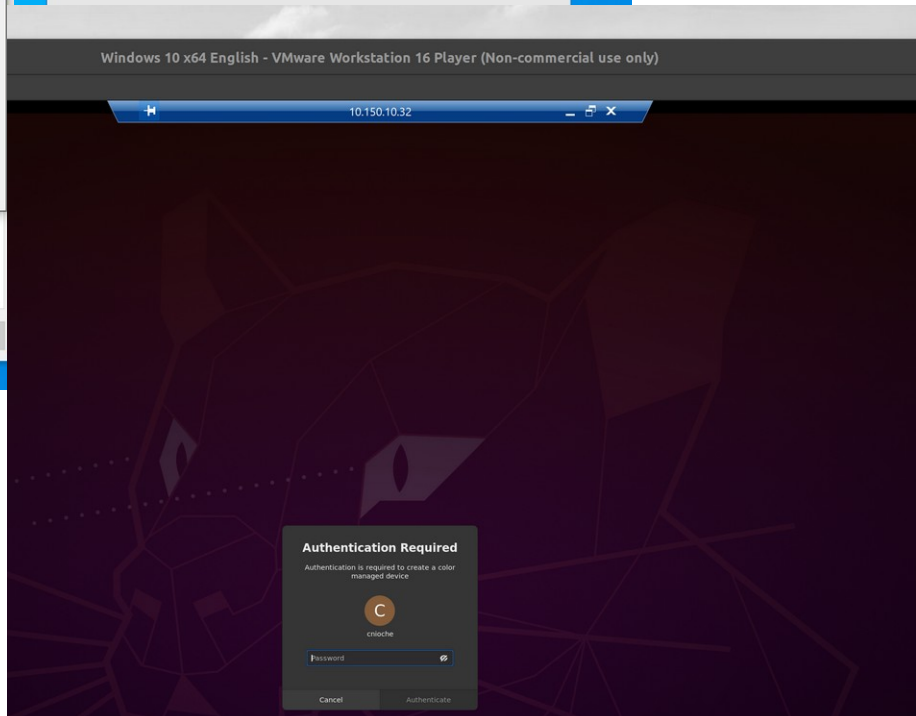
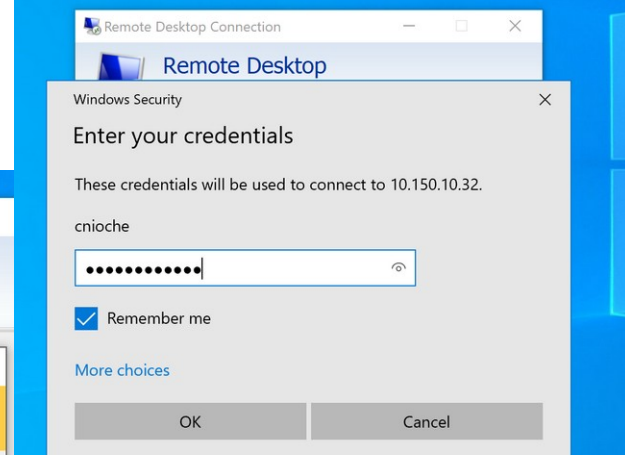
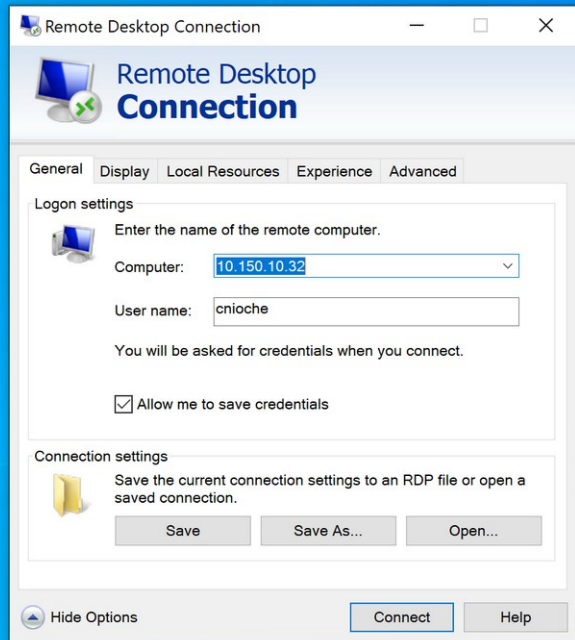




Login : kgirum  
Password: \*\*\*\*\*

It's the same for litofs1





# Automount at litofs1



```
kgirum@litoail:~$ pwd
/home/kgirum
kgirum@litoail:~$ cd /mnt/data/kgirum/
kgirum@litoail:/mnt/data/kgirum$ ls
kgirum@litoail:/mnt/data/kgirum$
```

*/mnt/data/kgirum = on litofs1*

(keep memory, for admin):

```
sudo vim /etc/samba/litofs1_kgirum.conf
username=kgirum
password=*****
domain=WORKGROUP
sudo chmod 400 /etc/samba/litofs1_kgirum.conf
```

```
in sudo vim /etc/fstab
//10.150.10.31/litofs1/kgirum /mnt/data/kgirum cifs auto,x-
systemd.automount,cache=none,uid=kgirum,gid=litoGroup,credentials=/etc/samba/
litofs1_kgirum.conf,icharset=utf8 0 0
```

```
kgirum@litoai1: /mnt/data/kgirum$ sensors
coretemp-isa-0001
Adapter: ISA adapter
Package id 1: +40.0°C (high = +85.0°C, crit = +95.0°C)
Core 0: +36.0°C (high = +85.0°C, crit = +95.0°C)
Core 1: +33.0°C (high = +85.0°C, crit = +95.0°C)
Core 2: +34.0°C (high = +85.0°C, crit = +95.0°C)
Core 3: +31.0°C (high = +85.0°C, crit = +95.0°C)
Core 4: +31.0°C (high = +85.0°C, crit = +95.0°C)
Core 5: +33.0°C (high = +85.0°C, crit = +95.0°C)
Core 6: +32.0°C (high = +85.0°C, crit = +95.0°C)
Core 8: +33.0°C (high = +85.0°C, crit = +95.0°C)
Core 9: +30.0°C (high = +85.0°C, crit = +95.0°C)
Core 10: +33.0°C (high = +85.0°C, crit = +95.0°C)
Core 11: +31.0°C (high = +85.0°C, crit = +95.0°C)
Core 12: +34.0°C (high = +85.0°C, crit = +95.0°C)
Core 13: +34.0°C (high = +85.0°C, crit = +95.0°C)
Core 16: +32.0°C (high = +85.0°C, crit = +95.0°C)
Core 17: +33.0°C (high = +85.0°C, crit = +95.0°C)
Core 18: +32.0°C (high = +85.0°C, crit = +95.0°C)
Core 19: +34.0°C (high = +85.0°C, crit = +95.0°C)
Core 20: +34.0°C (high = +85.0°C, crit = +95.0°C)
Core 21: +32.0°C (high = +85.0°C, crit = +95.0°C)
Core 25: +31.0°C (high = +85.0°C, crit = +95.0°C)
Core 26: +30.0°C (high = +85.0°C, crit = +95.0°C)
Core 27: +32.0°C (high = +85.0°C, crit = +95.0°C)
Core 28: +33.0°C (high = +85.0°C, crit = +95.0°C)
Core 29: +33.0°C (high = +85.0°C, crit = +95.0°C)
```

```
pch_lewisburg-virtual-0
Adapter: Virtual device
temp1: +36.0°C
```

```
coretemp-isa-0000
Adapter: ISA adapter
Package id 0: +36.0°C (high = +85.0°C, crit = +95.0°C)
Core 0: +32.0°C (high = +85.0°C, crit = +95.0°C)
Core 1: +33.0°C (high = +85.0°C, crit = +95.0°C)
Core 2: +31.0°C (high = +85.0°C, crit = +95.0°C)
Core 3: +30.0°C (high = +85.0°C, crit = +95.0°C)
Core 4: +28.0°C (high = +85.0°C, crit = +95.0°C)
Core 5: +29.0°C (high = +85.0°C, crit = +95.0°C)
Core 6: +31.0°C (high = +85.0°C, crit = +95.0°C)
Core 8: +29.0°C (high = +85.0°C, crit = +95.0°C)
Core 9: +30.0°C (high = +85.0°C, crit = +95.0°C)
Core 10: +33.0°C (high = +85.0°C, crit = +95.0°C)
Core 11: +31.0°C (high = +85.0°C, crit = +95.0°C)
Core 12: +32.0°C (high = +85.0°C, crit = +95.0°C)
Core 13: +33.0°C (high = +85.0°C, crit = +95.0°C)
Core 16: +30.0°C (high = +85.0°C, crit = +95.0°C)
Core 17: +31.0°C (high = +85.0°C, crit = +95.0°C)
Core 18: +31.0°C (high = +85.0°C, crit = +95.0°C)
Core 19: +32.0°C (high = +85.0°C, crit = +95.0°C)
Core 20: +32.0°C (high = +85.0°C, crit = +95.0°C)
Core 21: +29.0°C (high = +85.0°C, crit = +95.0°C)
Core 25: +28.0°C (high = +85.0°C, crit = +95.0°C)
Core 26: +31.0°C (high = +85.0°C, crit = +95.0°C)
Core 27: +30.0°C (high = +85.0°C, crit = +95.0°C)
Core 28: +31.0°C (high = +85.0°C, crit = +95.0°C)
Core 29: +31.0°C (high = +85.0°C, crit = +95.0°C)
```

# sensors & nvtop

Temperature to be checked regularly.

CPU : You can do some deep tests and go up to 85°C if you want.

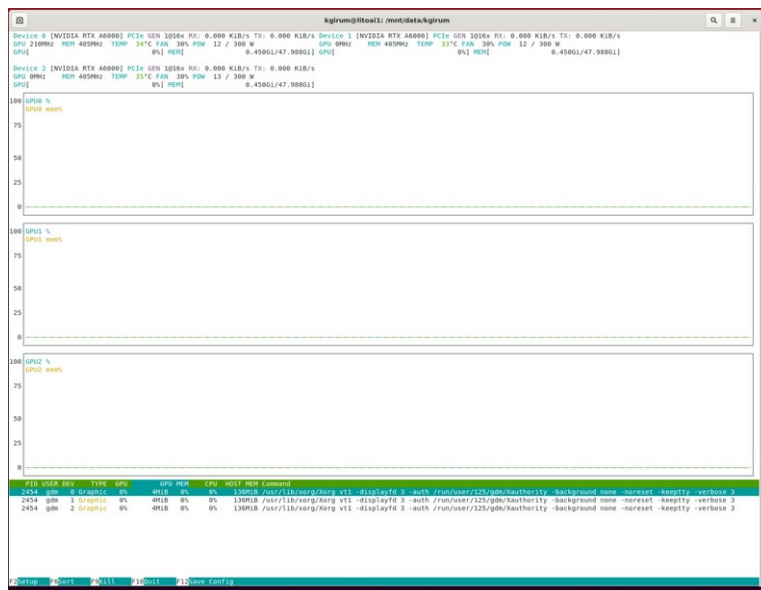
CPU : high = 85°C, critical = 95°C (hardware stop)

Server at rest:

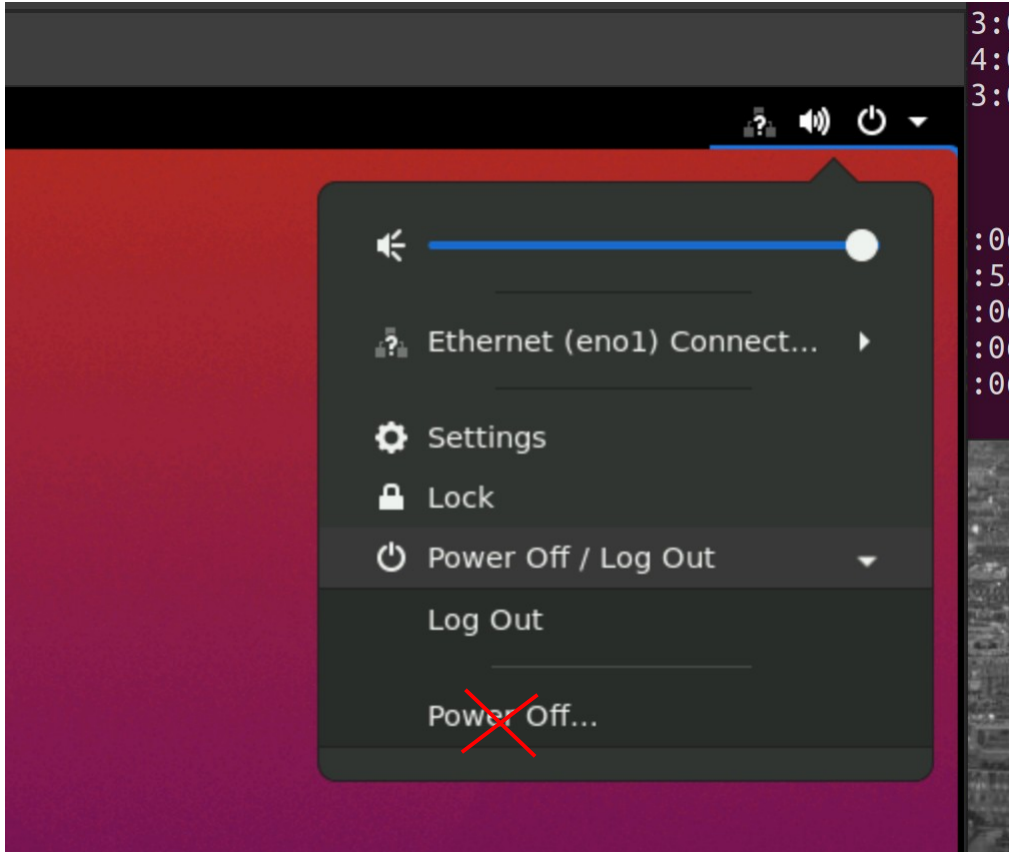
- if room door closed: 50°C
- if room door open: 35°C

GPU: 34-36°C with 30% FAN

GPU: (I don't know at what temperature we can go up for the GPU).







Log out is possible but not necessary if you want your session back the next time you connect

Kill remina directly is possible.

Power off : attention to be able to you have to physically (and manually) turn it back on.

Restart : ok, but prevent people from being connected (who)  
→ Discord message ? and done !

A Discord room called "litoai1" is available for this purpose.